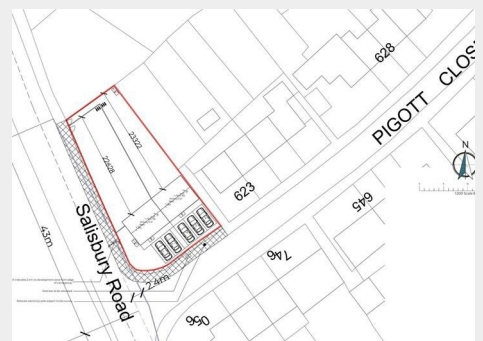


# Building Plot @, Pigott Close and Salisbury Road, Netheravon,

Auction Guide Price +++ £50,000



- FOR SALE BY ONLINE AUCTION
- WEDNESDAY 15TH OCTOBER 2025
- VIRTUAL TOUR NOW ONLINE
- VIEWINGS – REFER TO DETAILS
- LEGAL PACK COMPLETE
- OCTOBER LIVE ONLINE AUCTION
- FREEHOLD BUILDING PLOT
- PLANNING GRANTED
- 2 X 3 BED HOUSES | 1050 Sq Ft
- 28 DAY COMPLETION

Hollis Morgan – OCTOBER LIVE ONLINE AUCTION – A Freehold 0.16 ACRE BUILDING PLOT with PLANNING GRANTED to erect a scheme of 2 x 3 BED HOUSES ( 1050 Sq Ft ) with PARKING and GARDENS.

# Building Plot @, Pigott Close and Salisbury Road, Netheravon, Wilts, SP4 9QF

## Accommodation

### FOR SALE BY LIVE ONLINE AUCTION

ADDRESS | Land at the corner of Pigott Close & Salisbury Road, Netheravon, SP4 9QF | what3words /// easels.hires.splits

Lot Number 42

\*\*\* PLEASE NOTE NEW AUCTION START TIME - NOW 12:00 \*\*\*

The Live Online Auction is on Wednesday 15th October 2025 @ 12:00 Noon  
Registration Deadline is on Friday 10th October 2025 @ 16:00

The Auction will be streamed LIVE ONLINE via the Hollis Morgan website & you can chose to bid by telephone, proxy or via your computer.  
Registration is a simple online process - please visit the Hollis Morgan auction website and click "REGISTER TO BID"

### GUIDE PRICE RANGE

The vendors have issued a guide price range of £50,000 - £100,000 for this lot.

### THE LAND

A Freehold 0.16 Acre parcel of land on the corner of Pigott Close and Salisbury Road.  
Sold with vacant possession.

Tenure - Freehold

### THE OPPORTUNITY

PLANNING GRANTED

Planning ( PL/2022/05819 ) was granted in 20/10/2022 by Wiltshire Council to erect a scheme of 2 x semi detached houses ( 1050 Sq Ft ) on this 0.16 acre site.

PROPOSED SCHEDULE OF ACCOMODATION | 1050 Sq Ft

Ground Floor - Open Plan Kitchen / Dining Space with French Doors to Garden | WC | Reception with French Doors to Garden  
First Floor - Bedroom 1 | Bedroom 2 | Bedroom 3 | Bathroom  
Outside - Off Street Parking x 2 / 3 | Rear Garden with rear access.

REDUCED PRICE FOR AUCTION | WAS £185K

The plot has been previously listed with local agents for £185,000 and is offered with a reduced guide price for auction.

### PLANNING GRANTED

Wiltshire Council

PL/2022/05819

Site Address - Land at the corner of Pigott Close & Salisbury Road, Netheravon, SP4 9QF

Proposal - The construction of a pair of semi-detached dwellings and associated infrastructure

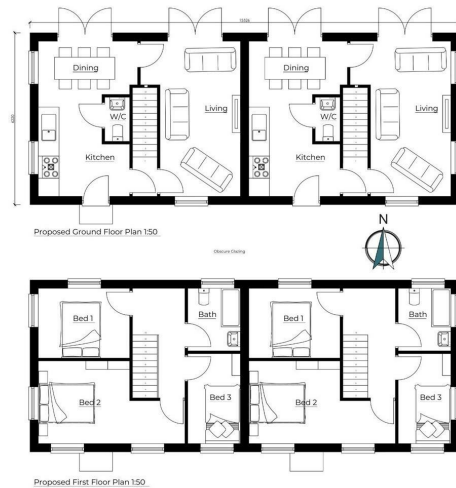
Issued Decision - Approve with Conditions

Decision Notice Sent Date - 20/10/2022

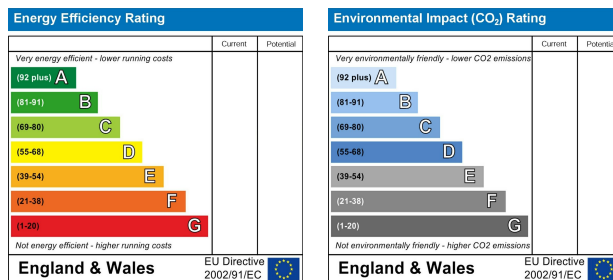
### PLANNING INFORMATION

Full details of the proposed scheme and drawings can be downloaded with the online legal pack.

## Floor plan



## EPC Chart



9 Waterloo Street  
Clifton  
Bristol  
BS8 4BT

**hollis  
morgan**

Tel: 0117 973 6565

Email: [post@hollismorgan.co.uk](mailto:post@hollismorgan.co.uk)

[www.hollismorgan.co.uk](http://www.hollismorgan.co.uk)

Hollis Morgan Property Limited, registered in England, registered 7275716.  
Registered address, 5 Upper Belgrave Road, Clifton, Bristol BS8 2XQ

## Auction Property Details Disclaimer

Hollis Morgan endeavour to make our sales details, clear, accurate and reliable in line with the Consumer Protection from Unfair Trading Regulations 2008 but they should not be relied on as statements or representations of fact.

Please refer to our website for further details.